

高性能
新フラットドリル

KDZ

独自の new コーティングで
フラットドリルを刷新
「長寿命」「高精度」「安定加工」の実現へ



MEGACOAT
NANO EX | Solid |

座ぐり加工など多様な用途で課題をソリューション
高性能と価値あるプライスで、フラットドリルも K-series へ



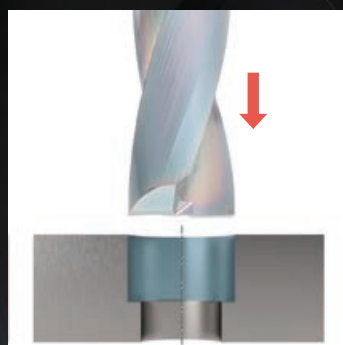
高性能 新フラットドリル

KDZ

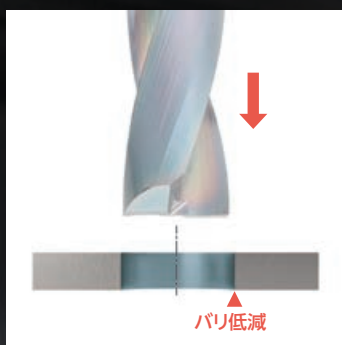
Re: Innovation

オーロラに煌めく 高性能フラットドリル

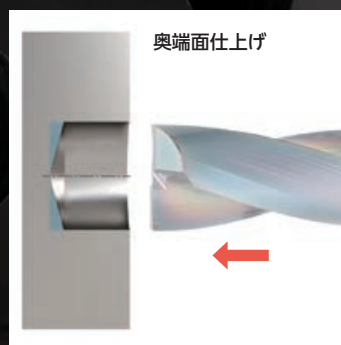
1 多様な加工に対応



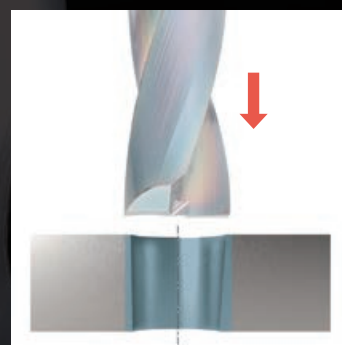
座ぐり加工



薄板の突き加工



自動盤・旋盤加工



穴の矯正

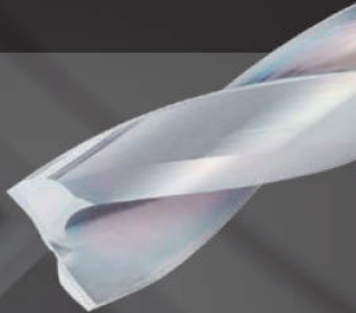
加工用途に合わせて選べる2タイプ

安定性重視

KDZ

スタンダード

刃先強化



ショート

レギュラー

計111型番
加工径 $\phi 1.0 \sim \phi 12.0$

計91型番
加工径 $\phi 3.0 \sim \phi 12.0$

多様な加工に安定して対応する
スタンダードタイプ

- ・コーナ部フラットランド仕様
- ・特殊溝形状で優れた切りくず排出性
- ・MEGACOAT NANO EXで長寿命

円筒面・曲面への穴あけ加工等、先端角付きドリルでは、加工困難なワーク形状でも加工精度が安定
(円筒面・曲面へは、KDZ-HPをお勧めします)

切れ味重視

KDZ-HP

高精度加工

低抵抗



NEW

ショート

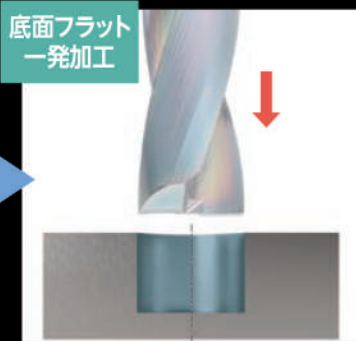
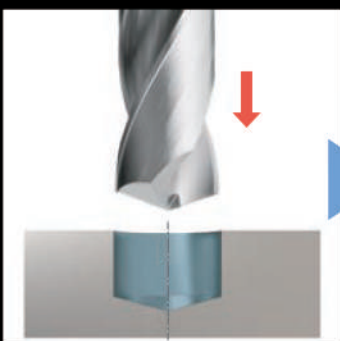
レギュラー

計127型番
加工径 $\phi 1.0 \sim \phi 20.0$

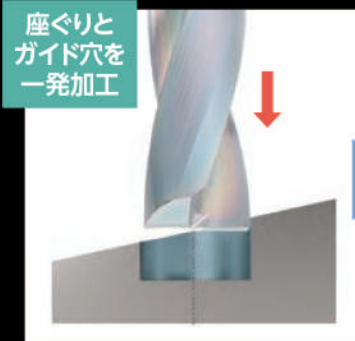
計91型番
加工径 $\phi 3.0 \sim \phi 12.0$

特殊シンニング形状で、高精度
安定加工を実現

- ・スムーズな食付きで加工精度向上
- ・MEGACOAT NANO EXで長寿命



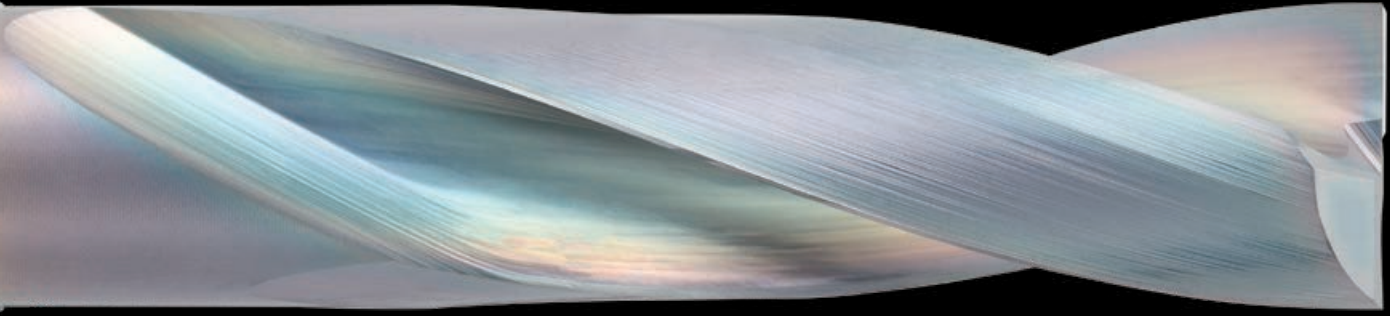
ドリル加工後の底面仕上げ



座ぐりと
ガイド穴を
一発加工



傾斜面への座ぐり・ガイド穴加工



ドリルに求められる性能を兼ね備えた
独自コーティングが登場



2 耐摩耗性と耐欠損性を高次元で両立

特殊ナノ積層×多層積層

ナノ積層化

AICrN系コーティング

優れた潤滑性、溶着性



ナノ積層化

TiAlN系コーティング

優れた耐摩耗性



Point

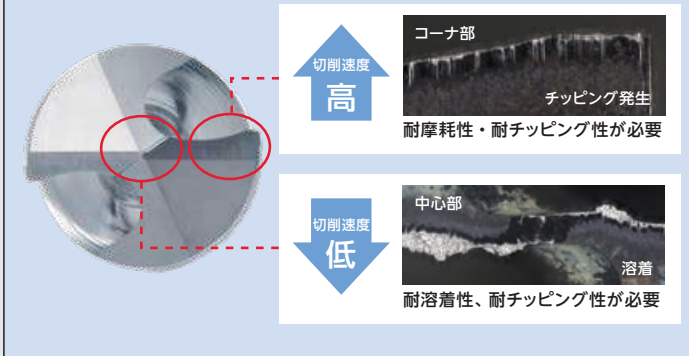
1. 膜の積層周期を適正化し靱性を向上
2. 潤滑性・耐溶着性に優れるCr量を増やし
摩耗、チッピングを抑制

膜

母材

一般的なドリルの課題

外周側と中心側の周速の違いにより
長寿命化のためには相反する性能が必要



Solution

穴加工時切れ刃状態比較 (当社比較)



切削条件: Vc=80m/min, f=0.06mm/rev
加工径φ3, 加工深さ: 6mm Wet(外部給油) 被削材: S50C

KDZは独自コーティング MEGACOAT® NANO EXにより

耐摩耗性

耐溶着性

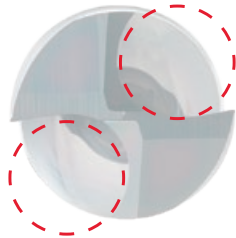
耐チッピング性

を高次元で実現することで、高精度な穴あけ加工が可能

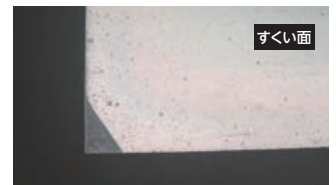
3 高い加工性能を実現する独自形状

KDZ 安定性重視

大きなチップポケット
優れた切りくず排出性



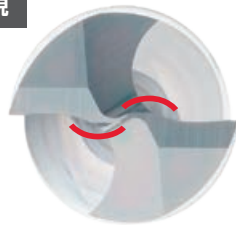
耐欠損性を向上するフラットランド仕様



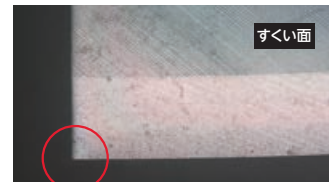
すくい面

KDZ-HP 切れ味重視

特殊シンニング仕様で
切りくずの分断を促進し
排出性を向上
刃先中心部への負荷低減



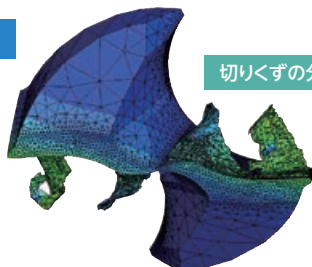
ランドがなく刃先先端からすくい面を形成
食付きが向上し、高精度・安定加工が可能 (〜φ12.0)



すくい面

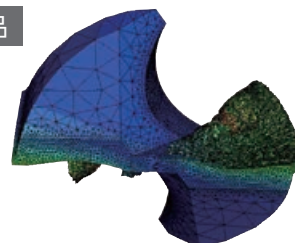
切りくず生成シミュレーション比較 (イメージ) (当社比較)

KDZ-HP

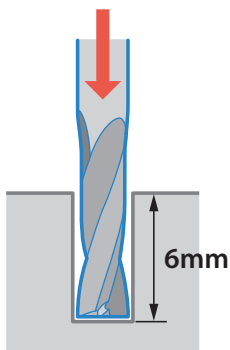
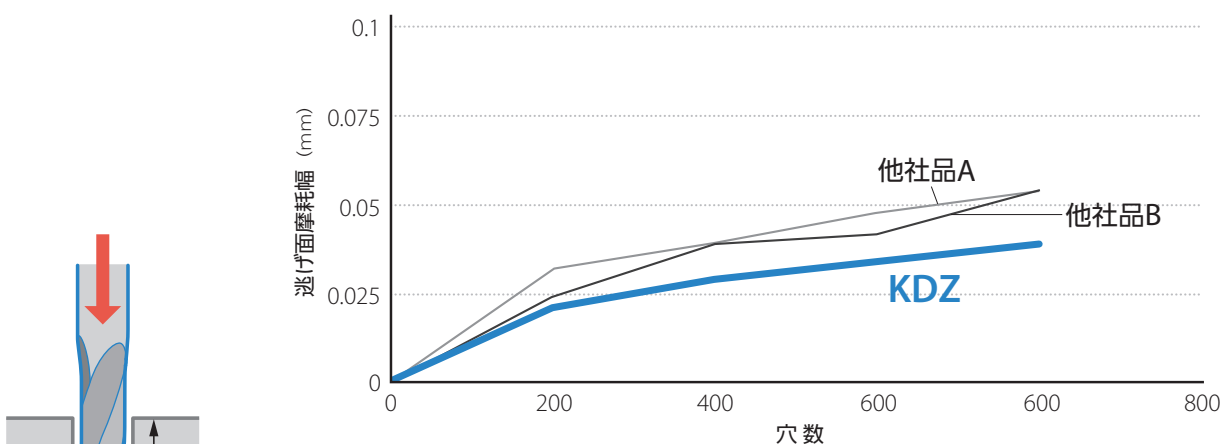


切りくずの分断を促進

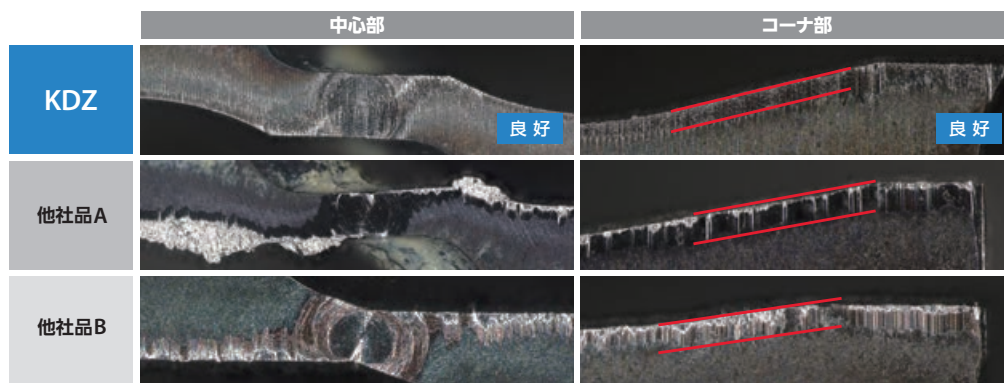
従来品



耐摩耗性比較



刃先状態



切削条件: Vc=80m/min, f=0.06mm/rev, 加工径φ3, 加工深さ: 6mm Wet(外部給油) 被削材:S50C

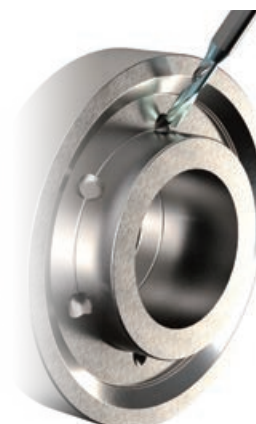
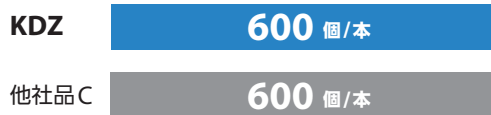
KDZは摩耗量を抑制。溶着やチッピングも少なく
高い耐摩耗性・耐溶着性・耐チッピング性を発揮

加工実例

自動車部品 S25C

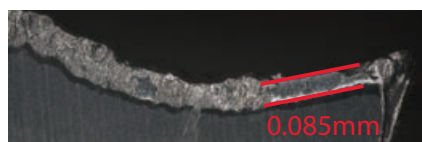
n = 6,000 min⁻¹ (Vc = 55 m/min)
Vf = 115 mm/min (f = 0.02 mm/rev)
加工深さ 3 mm Wet(外部給油) KDZ0300X3.0S060N

加工個数

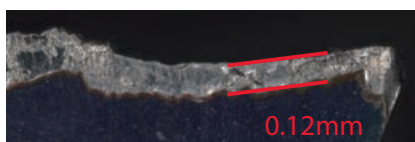


刃先状態

KDZ



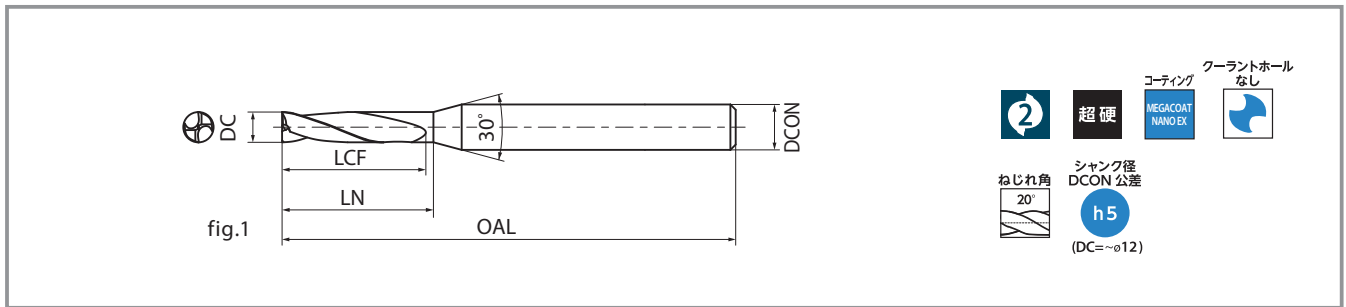
他社品C



KDZは優れた耐摩耗性と安定加工を実現

(ユーザー様の評価による)

KDZ ショート



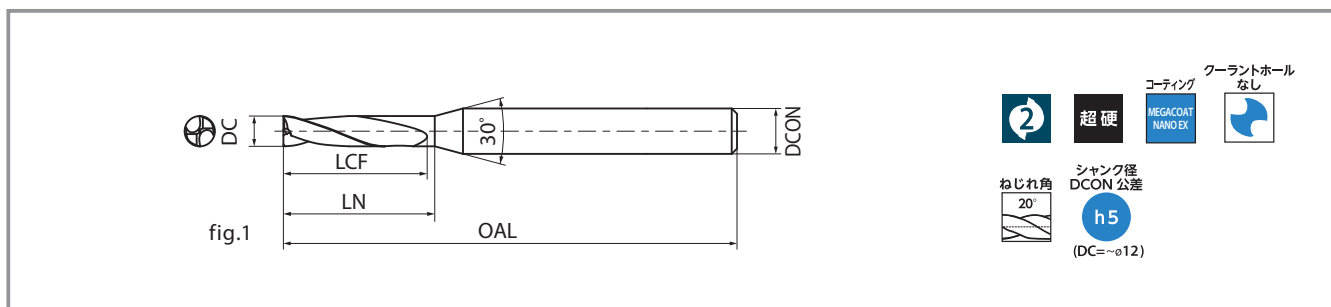
| 型番 | 在庫 | 寸法 (mm) | | | | | | 形状 | 希望小売価格 (円) |
|------------------|----|---------|-----------------|------|------|------|-----|-------|------------|
| | | DC | 外径公差 | LCF | LN | DCON | OAL | | |
| KDZ0100X1.5S040N | ● | 1.0 | 0 -0.010 | 3 | 4 | 4 | 50 | fig.1 | 5,480 |
| KDZ0110X1.5S040N | ● | 1.1 | 0 -0.010 | 3.5 | 4.5 | 4 | 50 | fig.1 | 5,480 |
| KDZ0120X1.5S040N | ● | 1.2 | 0 -0.010 | 4 | 5 | 4 | 50 | fig.1 | 5,480 |
| KDZ0130X1.5S040N | ● | 1.3 | 0 -0.010 | 4.5 | 5.5 | 4 | 50 | fig.1 | 5,480 |
| KDZ0140X1.5S040N | ● | 1.4 | 0 -0.010 | 5 | 6 | 4 | 50 | fig.1 | 5,480 |
| KDZ0150X1.5S040N | ● | 1.5 | 0 -0.010 | 5.5 | 6.5 | 4 | 50 | fig.1 | 5,480 |
| KDZ0160X1.5S040N | ● | 1.6 | 0 -0.010 | 6 | 7 | 4 | 50 | fig.1 | 5,480 |
| KDZ0170X1.5S040N | ● | 1.7 | 0 -0.010 | 6.5 | 7.5 | 4 | 50 | fig.1 | 5,480 |
| KDZ0180X1.5S040N | ● | 1.8 | 0 -0.010 | 7 | 8 | 4 | 50 | fig.1 | 5,480 |
| KDZ0190X1.5S040N | ● | 1.9 | 0 -0.010 | 7.5 | 8.5 | 4 | 50 | fig.1 | 5,480 |
| KDZ0200X1.5S040N | ● | 2.0 | 0 -0.010 | 8 | 9 | 4 | 50 | fig.1 | 5,480 |
| KDZ0210X1.5S040N | ● | 2.1 | 0 -0.010 | 8.5 | 9.5 | 4 | 50 | fig.1 | 5,480 |
| KDZ0220X1.5S040N | ● | 2.2 | 0 -0.010 | 9 | 10 | 4 | 50 | fig.1 | 5,480 |
| KDZ0230X1.5S040N | ● | 2.3 | 0 -0.010 | 9.5 | 10.5 | 4 | 50 | fig.1 | 5,480 |
| KDZ0240X1.5S040N | ● | 2.4 | 0 -0.010 | 10 | 11 | 4 | 50 | fig.1 | 5,480 |
| KDZ0250X1.5S040N | ● | 2.5 | 0 -0.010 | 10.5 | 11.5 | 4 | 50 | fig.1 | 5,480 |
| KDZ0260X1.5S040N | ● | 2.6 | 0 -0.010 | 11 | 12 | 4 | 50 | fig.1 | 5,480 |
| KDZ0270X1.5S040N | ● | 2.7 | 0 -0.010 | 11.5 | 12.5 | 4 | 50 | fig.1 | 5,480 |
| KDZ0280X1.5S040N | ● | 2.8 | 0 -0.010 | 12 | 13 | 4 | 50 | fig.1 | 5,480 |
| KDZ0290X1.5S040N | ● | 2.9 | 0 -0.010 | 12.5 | 13.5 | 4 | 50 | fig.1 | 5,480 |
| KDZ0300X1.5S060N | ● | 3.0 | 0 -0.012 | 10 | 11 | 6 | 60 | fig.1 | 5,770 |
| KDZ0310X1.5S060N | ● | 3.1 | 0 -0.012 | 10.5 | 11.5 | 6 | 60 | fig.1 | 5,770 |
| KDZ0320X1.5S060N | ● | 3.2 | 0 -0.012 | 11 | 12 | 6 | 60 | fig.1 | 5,770 |
| KDZ0330X1.5S060N | ● | 3.3 | 0 -0.012 | 11.5 | 12.5 | 6 | 60 | fig.1 | 5,770 |
| KDZ0340X1.5S060N | ● | 3.4 | 0 -0.012 | 12 | 13 | 6 | 60 | fig.1 | 5,770 |
| KDZ0350X1.5S060N | ● | 3.5 | 0 -0.012 | 12.5 | 13.5 | 6 | 60 | fig.1 | 5,770 |
| KDZ0360X1.5S060N | ● | 3.6 | 0 -0.012 | 13 | 14 | 6 | 60 | fig.1 | 5,960 |

加工深さは1.5D (1.5 x DC) を目安としてください

| 型番 | 在庫 | 寸法 (mm) | | | | | | 形状 | 希望小売価格 (円) |
|------------------|----|---------|-----------------|------|------|------|-----|-------|------------|
| | | DC | 外径公差 | LCF | LN | DCON | OAL | | |
| KDZ0370X1.5S060N | ● | 3.7 | 0 -0.012 | 12 | 13 | 6 | 60 | fig.1 | 5,960 |
| KDZ0380X1.5S060N | ● | 3.8 | 0 -0.012 | 12.5 | 13.5 | 6 | 60 | fig.1 | 5,960 |
| KDZ0390X1.5S060N | ● | 3.9 | 0 -0.012 | 13 | 14 | 6 | 60 | fig.1 | 5,960 |
| KDZ0400X1.5S060N | ● | 4.0 | 0 -0.012 | 13.5 | 14.5 | 6 | 60 | fig.1 | 5,960 |
| KDZ0410X1.5S060N | ● | 4.1 | 0 -0.012 | 14 | 15 | 6 | 60 | fig.1 | 5,960 |
| KDZ0420X1.5S060N | ● | 4.2 | 0 -0.012 | 14.5 | 15.5 | 6 | 60 | fig.1 | 5,960 |
| KDZ0430X1.5S060N | ● | 4.3 | 0 -0.012 | 15 | 16 | 6 | 60 | fig.1 | 5,960 |
| KDZ0440X1.5S060N | ● | 4.4 | 0 -0.012 | 15.5 | 16.5 | 6 | 60 | fig.1 | 5,960 |
| KDZ0450X1.5S060N | ● | 4.5 | 0 -0.012 | 16 | 17 | 6 | 60 | fig.1 | 5,960 |
| KDZ0460X1.5S060N | ● | 4.6 | 0 -0.012 | 16.5 | 17.5 | 6 | 60 | fig.1 | 5,960 |
| KDZ0470X1.5S060N | ● | 4.7 | 0 -0.012 | 17 | 18 | 6 | 60 | fig.1 | 5,960 |
| KDZ0480X1.5S060N | ● | 4.8 | 0 -0.012 | 17.5 | 18.5 | 6 | 60 | fig.1 | 5,960 |
| KDZ0490X1.5S060N | ● | 4.9 | 0 -0.012 | 18 | 19 | 6 | 60 | fig.1 | 5,960 |
| KDZ0500X1.5S060N | ● | 5.0 | 0 -0.012 | 18.5 | 19.5 | 6 | 60 | fig.1 | 5,960 |
| KDZ0510X1.5S060N | ● | 5.1 | 0 -0.012 | 19 | 20 | 6 | 60 | fig.1 | 5,960 |
| KDZ0520X1.5S060N | ● | 5.2 | 0 -0.012 | 19.5 | 20.5 | 6 | 60 | fig.1 | 5,960 |
| KDZ0530X1.5S060N | ● | 5.3 | 0 -0.012 | 20 | 21 | 6 | 60 | fig.1 | 5,960 |
| KDZ0540X1.5S060N | ● | 5.4 | 0 -0.012 | 20.5 | 21.5 | 6 | 60 | fig.1 | 5,960 |
| KDZ0550X1.5S060N | ● | 5.5 | 0 -0.012 | 21 | 22 | 6 | 60 | fig.1 | 5,960 |
| KDZ0560X1.5S060N | ● | 5.6 | 0 -0.012 | 21.5 | 22.5 | 6 | 60 | fig.1 | 5,960 |
| KDZ0570X1.5S060N | ● | 5.7 | 0 -0.012 | 22 | 23 | 6 | 60 | fig.1 | 5,960 |
| KDZ0580X1.5S060N | ● | 5.8 | 0 -0.012 | 22.5 | 23.5 | 6 | 60 | fig.1 | 5,960 |
| KDZ0590X1.5S060N | ● | 5.9 | 0 -0.012 | 23 | 24 | 6 | 60 | fig.1 | 5,960 |

●: 標準在庫

KDZ ショート



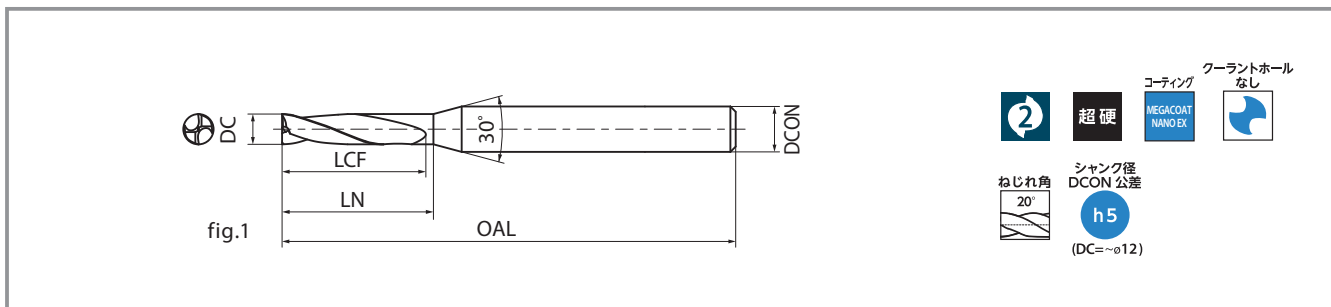
| 型番 | 在庫 | 寸法 (mm) | | | | | | 形状 | 希望小売価格 (円) |
|------------------|----|---------|-----------------|-----|----|------|-----|-------|------------|
| | | DC | 外径公差 | LCF | LN | DCON | OAL | | |
| KDZ0600X1.5S060N | ● | 6.0 | 0 -0.012 | | | 6 | 60 | fig.1 | 7,290 |
| KDZ0610X1.5S080N | ● | 6.1 | 0 -0.015 | 19 | 21 | 8 | 70 | | 7,660 |
| KDZ0620X1.5S080N | ● | 6.2 | | | | | | | |
| KDZ0630X1.5S080N | ● | 6.3 | 0 -0.015 | 20 | 22 | 8 | 70 | fig.1 | 7,660 |
| KDZ0640X1.5S080N | ● | 6.4 | | | | | | | |
| KDZ0650X1.5S080N | ● | 6.5 | | | | | | | |
| KDZ0660X1.5S080N | ● | 6.6 | | | | | | | |
| KDZ0670X1.5S080N | ● | 6.7 | 0 -0.015 | 21 | 23 | 8 | 70 | fig.1 | 8,130 |
| KDZ0680X1.5S080N | ● | 6.8 | | | | | | | |
| KDZ0690X1.5S080N | ● | 6.9 | | | | | | | |
| KDZ0700X1.5S080N | ● | 7.0 | 0 -0.015 | 22 | 24 | 8 | 70 | fig.1 | 8,130 |
| KDZ0710X1.5S080N | ● | 7.1 | | | | | | | |
| KDZ0720X1.5S080N | ● | 7.2 | | | | | | | |
| KDZ0730X1.5S080N | ● | 7.3 | | | | | | | |
| KDZ0740X1.5S080N | ● | 7.4 | 0 -0.015 | 23 | 25 | 8 | 70 | fig.1 | 8,610 |
| KDZ0750X1.5S080N | ● | 7.5 | | | | | | | |
| KDZ0760X1.5S080N | ● | 7.6 | 0 -0.015 | 24 | 25 | 8 | 70 | fig.1 | 9,270 |
| KDZ0770X1.5S080N | ● | 7.7 | | | | | | | |
| KDZ0780X1.5S080N | ● | 7.8 | | | | | | | |
| KDZ0790X1.5S080N | ● | 7.9 | | | | | | | |
| KDZ0800X1.5S080N | ● | 8.0 | 0 -0.015 | 25 | 27 | 8 | 70 | fig.1 | 9,270 |
| KDZ0810X1.5S100N | ● | 8.1 | | | | | | | |
| KDZ0820X1.5S100N | ● | 8.2 | | | | | | | |
| KDZ0830X1.5S100N | ● | 8.3 | 0 -0.015 | 26 | 28 | 10 | 80 | fig.1 | 10,030 |
| KDZ0840X1.5S100N | ● | 8.4 | | | | | | | |
| KDZ0850X1.5S100N | ● | 8.5 | | | | | | | |
| KDZ0860X1.5S100N | ● | 8.6 | 0 -0.015 | 27 | 29 | 10 | 80 | fig.1 | 10,600 |
| KDZ0870X1.5S100N | ● | 8.7 | | | | | | | |
| KDZ0880X1.5S100N | ● | 8.8 | | | | | | | |
| KDZ0890X1.5S100N | ● | 8.9 | | | | | | | |
| KDZ0900X1.5S100N | ● | 9.0 | 0 -0.015 | 28 | 30 | 10 | 80 | fig.1 | 10,600 |
| KDZ0910X1.5S100N | ● | 9.1 | | | | | | | |

加工深さは1.5D(1.5×DC)を目安としてください

| 型番 | 在庫 | 寸法 (mm) | | | | | | 形状 | 希望小売価格 (円) |
|------------------|----|---------|-----------------|-----|----|------|-----|-------|------------|
| | | DC | 外径公差 | LCF | LN | DCON | OAL | | |
| KDZ0920X1.5S100N | ● | 9.2 | 0 -0.015 | 29 | 31 | 10 | 80 | fig.1 | 11,160 |
| KDZ0930X1.5S100N | ● | 9.3 | | | | | | | |
| KDZ0940X1.5S100N | ● | 9.4 | | | | | | | |
| KDZ0950X1.5S100N | ● | 9.5 | | | | | | | |
| KDZ0960X1.5S100N | ● | 9.6 | 0 -0.015 | 30 | 32 | 10 | 80 | fig.1 | 11,540 |
| KDZ0970X1.5S100N | ● | 9.7 | | | | | | | |
| KDZ0980X1.5S100N | ● | 9.8 | | | | | | | |
| KDZ0990X1.5S100N | ● | 9.9 | | | | | | | |
| KDZ1000X1.5S100N | ● | 10.0 | 0 -0.015 | 31 | 33 | 10 | 80 | fig.1 | 11,540 |
| KDZ1010X1.5S120N | ● | 10.1 | | | | | | | |
| KDZ1020X1.5S120N | ● | 10.2 | 0 -0.018 | 32 | 34 | 12 | 100 | fig.1 | 12,780 |
| KDZ1030X1.5S120N | ● | 10.3 | | | | | | | |
| KDZ1040X1.5S120N | ● | 10.4 | | | | | | | |
| KDZ1050X1.5S120N | ● | 10.5 | | | | | | | |
| KDZ1060X1.5S120N | ● | 10.6 | 0 -0.018 | 33 | 35 | 12 | 100 | fig.1 | 12,780 |
| KDZ1070X1.5S120N | ● | 10.7 | | | | | | | |
| KDZ1080X1.5S120N | ● | 10.8 | | | | | | | |
| KDZ1090X1.5S120N | ● | 10.9 | 0 -0.018 | 34 | 36 | 12 | 100 | fig.1 | 13,150 |
| KDZ1100X1.5S120N | ● | 11.0 | | | | | | | |
| KDZ1110X1.5S120N | ● | 11.1 | | | | | | | |
| KDZ1120X1.5S120N | ● | 11.2 | | | | | | | |
| KDZ1130X1.5S120N | ● | 11.3 | 0 -0.018 | 35 | 37 | 12 | 100 | fig.1 | 13,720 |
| KDZ1140X1.5S120N | ● | 11.4 | | | | | | | |
| KDZ1150X1.5S120N | ● | 11.5 | | | | | | | |
| KDZ1160X1.5S120N | ● | 11.6 | 0 -0.018 | 36 | 38 | 12 | 100 | fig.1 | 14,100 |
| KDZ1170X1.5S120N | ● | 11.7 | | | | | | | |
| KDZ1180X1.5S120N | ● | 11.8 | | | | | | | |
| KDZ1190X1.5S120N | ● | 11.9 | | | | | | | |
| KDZ1200X1.5S120N | ● | 12.0 | 0 -0.018 | 37 | 39 | 12 | 100 | fig.1 | 14,100 |

●：標準在庫

KDZ レギュラー



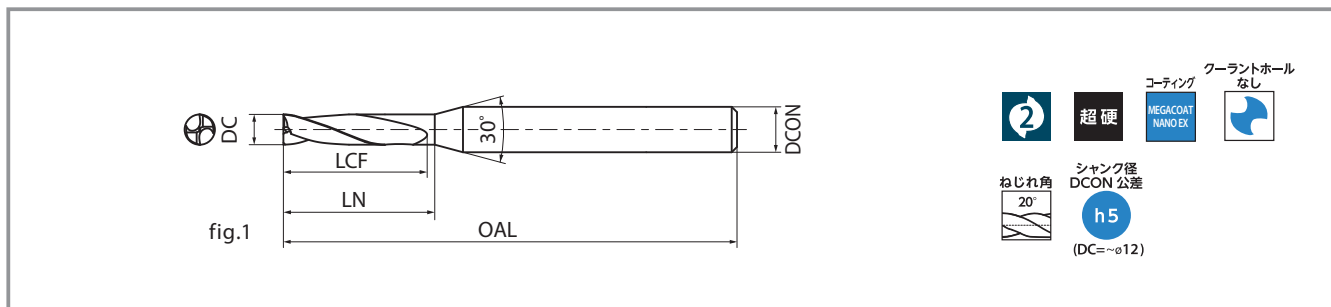
| 型番 | 在庫 | 寸法 (mm) | | | | | | 形状 | 希望小売価格 (円) |
|------------------|----|---------|---|-----|----|------|-----|-------|------------|
| | | DC | 外径公差 | LCF | LN | DCON | OAL | | |
| KDZ0300X3.0S060N | ● | 3.0 | $\begin{matrix} 0 \\ -0.010 \end{matrix}$ | | | | | fig.1 | 5,580 |
| KDZ0310X3.0S060N | ● | 3.1 | $\begin{matrix} 0 \\ -0.012 \end{matrix}$ | 14 | 15 | 6 | 60 | fig.1 | 5,910 |
| KDZ0320X3.0S060N | ● | 3.2 | $\begin{matrix} 0 \\ -0.012 \end{matrix}$ | | | | | | |
| KDZ0330X3.0S060N | ● | 3.3 | $\begin{matrix} 0 \\ -0.012 \end{matrix}$ | 15 | 16 | 6 | 60 | fig.1 | 5,910 |
| KDZ0340X3.0S060N | ● | 3.4 | $\begin{matrix} 0 \\ -0.012 \end{matrix}$ | | | | | | |
| KDZ0350X3.0S060N | ● | 3.5 | $\begin{matrix} 0 \\ -0.012 \end{matrix}$ | | | | | | 5,910 |
| KDZ0360X3.0S060N | ● | 3.6 | $\begin{matrix} 0 \\ -0.012 \end{matrix}$ | | | | | | |
| KDZ0370X3.0S060N | ● | 3.7 | $\begin{matrix} 0 \\ -0.012 \end{matrix}$ | 17 | 18 | 6 | 60 | fig.1 | 6,100 |
| KDZ0380X3.0S060N | ● | 3.8 | $\begin{matrix} 0 \\ -0.012 \end{matrix}$ | | | | | | |
| KDZ0390X3.0S060N | ● | 3.9 | $\begin{matrix} 0 \\ -0.012 \end{matrix}$ | | | | | | |
| KDZ0400X3.0S060N | ● | 4.0 | $\begin{matrix} 0 \\ -0.012 \end{matrix}$ | 19 | 20 | 6 | 60 | fig.1 | 6,100 |
| KDZ0410X3.0S060N | ● | 4.1 | $\begin{matrix} 0 \\ -0.012 \end{matrix}$ | | | | | | 6,480 |
| KDZ0420X3.0S060N | ● | 4.2 | $\begin{matrix} 0 \\ -0.012 \end{matrix}$ | | | | | | |
| KDZ0430X3.0S060N | ● | 4.3 | $\begin{matrix} 0 \\ -0.012 \end{matrix}$ | 20 | 21 | 6 | 60 | fig.1 | 6,480 |
| KDZ0440X3.0S060N | ● | 4.4 | $\begin{matrix} 0 \\ -0.012 \end{matrix}$ | | | | | | |
| KDZ0450X3.0S060N | ● | 4.5 | $\begin{matrix} 0 \\ -0.012 \end{matrix}$ | | | | | | 6,480 |
| KDZ0460X3.0S060N | ● | 4.6 | $\begin{matrix} 0 \\ -0.012 \end{matrix}$ | 21 | 22 | 6 | 60 | fig.1 | 6,810 |
| KDZ0470X3.0S060N | ● | 4.7 | $\begin{matrix} 0 \\ -0.012 \end{matrix}$ | | | | | | |

加工深さは2.0D (2.0 × DC) を目安としてください
2D以上の深さとなる場合はステップ加工を推奨します

| 型番 | 在庫 | 寸法 (mm) | | | | | | 形状 | 希望小売価格 (円) |
|------------------|----|---------|---|-----|----|------|-----|-------|------------|
| | | DC | 外径公差 | LCF | LN | DCON | OAL | | |
| KDZ0480X3.0S060N | ● | 4.8 | $\begin{matrix} 0 \\ -0.012 \end{matrix}$ | 21 | 22 | 6 | 60 | fig.1 | 6,810 |
| KDZ0490X3.0S060N | ● | 4.9 | $\begin{matrix} 0 \\ -0.012 \end{matrix}$ | | | | | | |
| KDZ0500X3.0S060N | ● | 5.0 | $\begin{matrix} 0 \\ -0.012 \end{matrix}$ | | | | | | 6,810 |
| KDZ0510X3.0S060N | ● | 5.1 | $\begin{matrix} 0 \\ -0.012 \end{matrix}$ | 23 | 24 | 6 | 60 | fig.1 | 7,290 |
| KDZ0520X3.0S060N | ● | 5.2 | $\begin{matrix} 0 \\ -0.012 \end{matrix}$ | | | | | | |
| KDZ0530X3.0S060N | ● | 5.3 | $\begin{matrix} 0 \\ -0.012 \end{matrix}$ | 24 | 25 | 6 | 60 | fig.1 | 7,290 |
| KDZ0540X3.0S060N | ● | 5.4 | $\begin{matrix} 0 \\ -0.012 \end{matrix}$ | | | | | | |
| KDZ0550X3.0S060N | ● | 5.5 | $\begin{matrix} 0 \\ -0.012 \end{matrix}$ | 25 | 26 | 6 | 60 | fig.1 | 7,290 |
| KDZ0560X3.0S060N | ● | 5.6 | $\begin{matrix} 0 \\ -0.012 \end{matrix}$ | | | | | | |
| KDZ0570X3.0S060N | ● | 5.7 | $\begin{matrix} 0 \\ -0.012 \end{matrix}$ | 26 | 27 | 6 | 60 | fig.1 | 7,470 |
| KDZ0580X3.0S060N | ● | 5.8 | $\begin{matrix} 0 \\ -0.012 \end{matrix}$ | | | | | | |
| KDZ0590X3.0S060N | ● | 5.9 | $\begin{matrix} 0 \\ -0.012 \end{matrix}$ | | | | | | |
| KDZ0600X3.0S060N | ● | 6.0 | $\begin{matrix} 0 \\ -0.012 \end{matrix}$ | | 28 | 6 | 60 | | 7,470 |
| KDZ0610X3.0S080N | ● | 6.1 | $\begin{matrix} 0 \\ -0.015 \end{matrix}$ | 28 | | | | | |
| KDZ0620X3.0S080N | ● | 6.2 | $\begin{matrix} 0 \\ -0.015 \end{matrix}$ | | 29 | 8 | 70 | fig.1 | 7,850 |
| KDZ0630X3.0S080N | ● | 6.3 | $\begin{matrix} 0 \\ -0.015 \end{matrix}$ | | | | | | |
| KDZ0640X3.0S080N | ● | 6.4 | $\begin{matrix} 0 \\ -0.015 \end{matrix}$ | | | | | | |
| KDZ0650X3.0S080N | ● | 6.5 | $\begin{matrix} 0 \\ -0.015 \end{matrix}$ | 30 | 31 | 8 | 70 | fig.1 | 7,850 |

● : 標準在庫

KDZ レギュラー



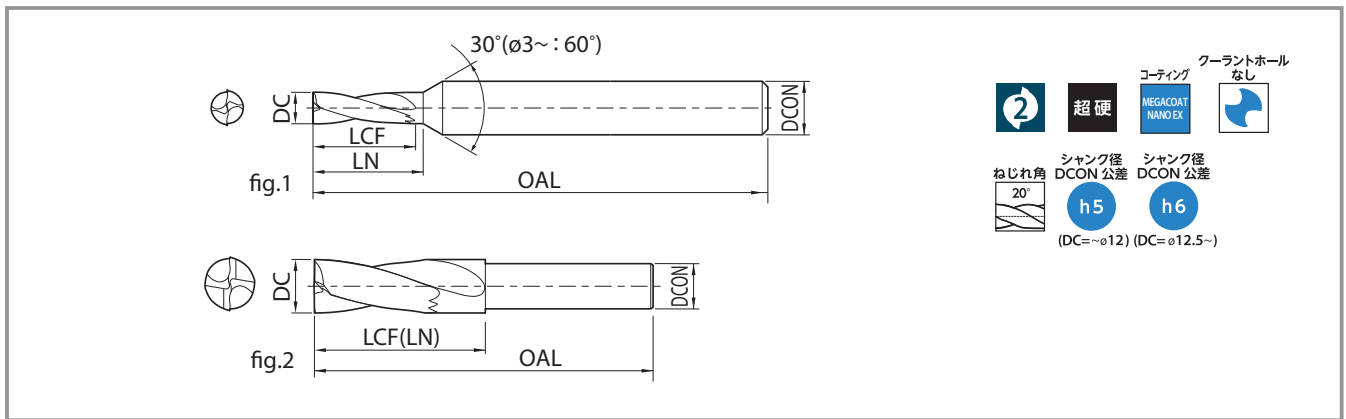
| 型番 | 在庫 | 寸法 (mm) | | | | | | 形状 | 希望小売価格 (円) |
|------------------|----|---------|-------------|-----|----|------|-----|-------|------------|
| | | DC | 外径公差 | LCF | LN | DCON | OAL | | |
| KDZ0660X3.0S080N | ● | 6.6 | 0 -0.015 | 30 | 31 | 8 | 70 | fig.1 | 8,320 |
| KDZ0670X3.0S080N | ● | 6.7 | | | | | | | |
| KDZ0680X3.0S080N | ● | 6.8 | 0 -0.015 | 31 | 32 | 8 | 70 | fig.1 | 8,320 |
| KDZ0690X3.0S080N | ● | 6.9 | | | | | | | |
| KDZ0700X3.0S080N | ● | 7.0 | 0 -0.015 | 32 | 33 | 8 | 70 | fig.1 | 8,320 |
| KDZ0710X3.0S080N | ● | 7.1 | | | | | | | |
| KDZ0720X3.0S080N | ● | 7.2 | | | | | | | |
| KDZ0730X3.0S080N | ● | 7.3 | | | | | | | |
| KDZ0740X3.0S080N | ● | 7.4 | | | | | | | |
| KDZ0750X3.0S080N | ● | 7.5 | | | | | | | |
| KDZ0760X3.0S080N | ● | 7.6 | | | | | | | |
| KDZ0770X3.0S080N | ● | 7.7 | | | | | | | |
| KDZ0780X3.0S080N | ● | 7.8 | | | | | | | |
| KDZ0790X3.0S080N | ● | 7.9 | | | | | | | |
| KDZ0800X3.0S080N | ● | 8.0 | 0 -0.015 | 34 | 35 | 8 | 70 | fig.1 | 8,790 |
| KDZ0810X3.0S100N | ● | 8.1 | | | | | | | |
| KDZ0820X3.0S100N | ● | 8.2 | | | | | | | |
| KDZ0830X3.0S100N | ● | 8.3 | | | | | | | |
| KDZ0840X3.0S100N | ● | 8.4 | | | | | | | |
| KDZ0850X3.0S100N | ● | 8.5 | | | | | | | |
| KDZ0860X3.0S100N | ● | 8.6 | | | | | | | |
| KDZ0870X3.0S100N | ● | 8.7 | | | | | | | |
| KDZ0880X3.0S100N | ● | 8.8 | | | | | | | |
| KDZ0890X3.0S100N | ● | 8.9 | | | | | | | |
| KDZ0900X3.0S100N | ● | 9.0 | 0 -0.015 | 36 | 37 | 10 | 80 | fig.1 | 9,460 |
| KDZ0910X3.0S100N | ● | 9.1 | | | | | | | |
| KDZ0920X3.0S100N | ● | 9.2 | | | | | | | |
| KDZ0930X3.0S100N | ● | 9.3 | | | | | | | |
| KDZ0940X3.0S100N | ● | 9.4 | | | | | | | |
| KDZ0950X3.0S100N | ● | 9.5 | | | | | | | |
| KDZ0960X3.0S100N | ● | 9.6 | | | | | | | |
| KDZ0970X3.0S100N | ● | 9.7 | | | | | | | |
| KDZ0980X3.0S100N | ● | 9.8 | | | | | | | |
| KDZ0990X3.0S100N | ● | 9.9 | | | | | | | |
| KDZ1000X3.0S100N | ● | 10.0 | 0 -0.018 | 42 | 43 | 10 | 80 | fig.1 | 11,360 |
| KDZ1010X3.0S120N | ● | 10.1 | | | | | | | |
| KDZ1020X3.0S120N | ● | 10.2 | | | | | | | |
| KDZ1030X3.0S120N | ● | 10.3 | | | | | | | |
| KDZ1040X3.0S120N | ● | 10.4 | | | | | | | |
| KDZ1050X3.0S120N | ● | 10.5 | | | | | | | |
| KDZ1060X3.0S120N | ● | 10.6 | | | | | | | |
| KDZ1070X3.0S120N | ● | 10.7 | | | | | | | |
| KDZ1080X3.0S120N | ● | 10.8 | | | | | | | |
| KDZ1090X3.0S120N | ● | 10.9 | | | | | | | |
| KDZ1100X3.0S120N | ● | 11.0 | 0 -0.018 | 45 | 46 | 12 | 100 | fig.1 | 11,730 |
| KDZ1110X3.0S120N | ● | 11.1 | | | | | | | |
| KDZ1120X3.0S120N | ● | 11.2 | | | | | | | |
| KDZ1130X3.0S120N | ● | 11.3 | | | | | | | |
| KDZ1140X3.0S120N | ● | 11.4 | | | | | | | |
| KDZ1150X3.0S120N | ● | 11.5 | | | | | | | |
| KDZ1160X3.0S120N | ● | 11.6 | | | | | | | |
| KDZ1170X3.0S120N | ● | 11.7 | | | | | | | |
| KDZ1180X3.0S120N | ● | 11.8 | | | | | | | |
| KDZ1190X3.0S120N | ● | 11.9 | | | | | | | |
| KDZ1200X3.0S120N | ● | 12.0 | | | | | | | |

| 型番 | 在庫 | 寸法 (mm) | | | | | | 形状 | 希望小売価格 (円) | | | | | | | |
|------------------|----|---------|-------------|-----|----|------|-----|-------|------------|-------------|----|----|----|-----|-------|--------|
| | | DC | 外径公差 | LCF | LN | DCON | OAL | | | | | | | | | |
| KDZ0950X3.0S100N | ● | 9.5 | 0 -0.015 | 42 | 43 | 10 | 80 | fig.1 | 11,360 | | | | | | | |
| KDZ0960X3.0S100N | ● | 9.6 | | | | | | | | | | | | | | |
| KDZ0970X3.0S100N | ● | 9.7 | | | | | | | | | | | | | | |
| KDZ0980X3.0S100N | ● | 9.8 | | | | | | | | | | | | | | |
| KDZ0990X3.0S100N | ● | 9.9 | | | | | | | | | | | | | | |
| KDZ1000X3.0S100N | ● | 10.0 | | | | | | | | | | | | | | |
| KDZ1010X3.0S120N | ● | 10.1 | | | | | | | | | | | | | | |
| KDZ1020X3.0S120N | ● | 10.2 | | | | | | | | | | | | | | |
| KDZ1030X3.0S120N | ● | 10.3 | | | | | | | | | | | | | | |
| KDZ1040X3.0S120N | ● | 10.4 | | | | | | | | | | | | | | |
| KDZ1050X3.0S120N | ● | 10.5 | 0 -0.018 | 46 | 47 | 12 | 100 | fig.1 | 11,730 | | | | | | | |
| KDZ1060X3.0S120N | ● | 10.6 | | | | | | | | | | | | | | |
| KDZ1070X3.0S120N | ● | 10.7 | | | | | | | | | | | | | | |
| KDZ1080X3.0S120N | ● | 10.8 | | | | | | | | | | | | | | |
| KDZ1090X3.0S120N | ● | 10.9 | | | | | | | | | | | | | | |
| KDZ1100X3.0S120N | ● | 11.0 | | | | | | | | | | | | | | |
| KDZ1110X3.0S120N | ● | 11.1 | | | | | | | | | | | | | | |
| KDZ1120X3.0S120N | ● | 11.2 | | | | | | | | | | | | | | |
| KDZ1130X3.0S120N | ● | 11.3 | | | | | | | | | | | | | | |
| KDZ1140X3.0S120N | ● | 11.4 | | | | | | | | | | | | | | |
| KDZ1150X3.0S120N | ● | 11.5 | 0 -0.018 | 47 | 48 | 12 | 100 | fig.1 | 13,050 | | | | | | | |
| KDZ1160X3.0S120N | ● | 11.6 | | | | | | | | | | | | | | |
| KDZ1170X3.0S120N | ● | 11.7 | | | | | | | | | | | | | | |
| KDZ1180X3.0S120N | ● | 11.8 | | | | | | | | | | | | | | |
| KDZ1190X3.0S120N | ● | 11.9 | | | | | | | | | | | | | | |
| KDZ1200X3.0S120N | ● | 12.0 | | | | | | | | | | | | | | |
| KDZ1100X3.0S120N | ● | 11.0 | | | | | | | | 0 -0.018 | 51 | 52 | 12 | 100 | fig.1 | 13,050 |
| KDZ1110X3.0S120N | ● | 11.1 | | | | | | | | | | | | | | |
| KDZ1120X3.0S120N | ● | 11.2 | | | | | | | | | | | | | | |
| KDZ1130X3.0S120N | ● | 11.3 | | | | | | | | | | | | | | |
| KDZ1140X3.0S120N | ● | 11.4 | | | | | | | | | | | | | | |
| KDZ1150X3.0S120N | ● | 11.5 | | | | | | | | | | | | | | |
| KDZ1160X3.0S120N | ● | 11.6 | | | | | | | | | | | | | | |
| KDZ1170X3.0S120N | ● | 11.7 | | | | | | | | | | | | | | |
| KDZ1180X3.0S120N | ● | 11.8 | | | | | | | | | | | | | | |
| KDZ1190X3.0S120N | ● | 11.9 | | | | | | | | | | | | | | |
| KDZ1200X3.0S120N | ● | 12.0 | | | | | | | | | | | | | | |

●: 標準在庫

加工深さは2.0D (2.0 x DC) を目安としてください
2D以上の深さとなる場合はステップ加工を推奨します

KDZ-HP ショート



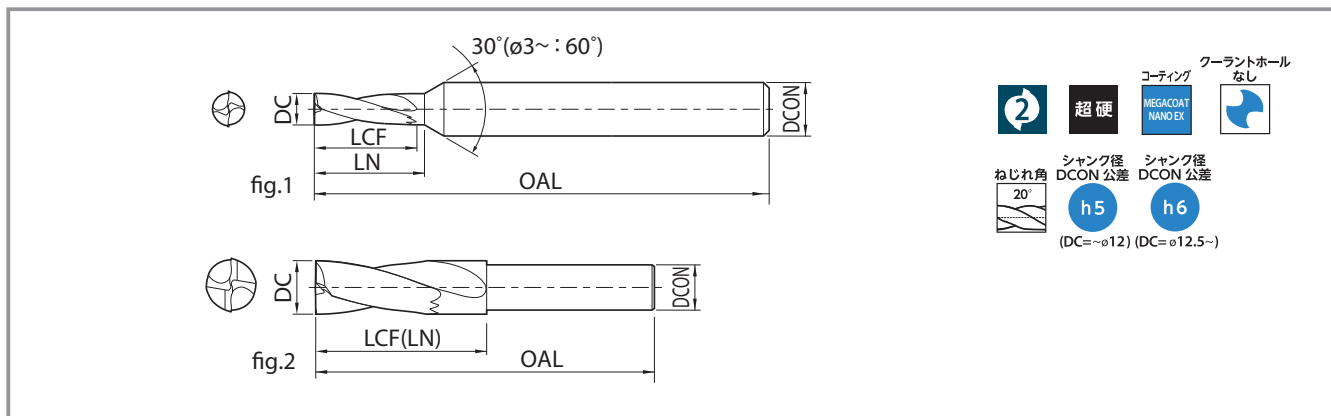
| 型番 | 在庫 | 寸法(mm) | | | | | 形状 | 希望小売価格(円) | |
|---------------------|----|--------|--------------|-----|------|------|----|-----------|-------|
| | | DC | 外径公差 | LCF | LN | DCON | | | OAL |
| KDZ0100X1.5S040N-HP | ● | 1.0 | $0_{-0.010}$ | 3.5 | 4.3 | 4 | 50 | fig.1 | 5,480 |
| KDZ0110X1.5S040N-HP | ● | 1.1 | $0_{-0.010}$ | 3.9 | 4.7 | 4 | 50 | fig.1 | 5,480 |
| KDZ0120X1.5S040N-HP | ● | 1.2 | $0_{-0.010}$ | 4.3 | 5.1 | 4 | 50 | fig.1 | 5,480 |
| KDZ0130X1.5S040N-HP | ● | 1.3 | $0_{-0.010}$ | 4.7 | 5.5 | 4 | 50 | fig.1 | 5,480 |
| KDZ0140X1.5S040N-HP | ● | 1.4 | $0_{-0.010}$ | 5.1 | 5.9 | 4 | 50 | fig.1 | 5,480 |
| KDZ0150X1.5S040N-HP | ● | 1.5 | $0_{-0.010}$ | 5.5 | 6.3 | 4 | 50 | fig.1 | 5,480 |
| KDZ0160X1.5S040N-HP | ● | 1.6 | $0_{-0.010}$ | 5.7 | 6.5 | 4 | 50 | fig.1 | 5,480 |
| KDZ0170X1.5S040N-HP | ● | 1.7 | $0_{-0.010}$ | 5.9 | 6.7 | 4 | 50 | fig.1 | 5,480 |
| KDZ0180X1.5S040N-HP | ● | 1.8 | $0_{-0.010}$ | 6.1 | 6.9 | 4 | 50 | fig.1 | 5,480 |
| KDZ0190X1.5S040N-HP | ● | 1.9 | $0_{-0.010}$ | 6.3 | 7.1 | 4 | 50 | fig.1 | 5,480 |
| KDZ0200X1.5S040N-HP | ● | 2.0 | $0_{-0.010}$ | 6.5 | 7.3 | 4 | 50 | fig.1 | 5,480 |
| KDZ0210X1.5S040N-HP | ● | 2.1 | $0_{-0.010}$ | 6.9 | 7.7 | 4 | 50 | fig.1 | 5,480 |
| KDZ0220X1.5S040N-HP | ● | 2.2 | $0_{-0.010}$ | 7.3 | 8.1 | 4 | 50 | fig.1 | 5,480 |
| KDZ0230X1.5S040N-HP | ● | 2.3 | $0_{-0.010}$ | 7.7 | 8.5 | 4 | 50 | fig.1 | 5,480 |
| KDZ0240X1.5S040N-HP | ● | 2.4 | $0_{-0.010}$ | 8.1 | 8.9 | 4 | 50 | fig.1 | 5,480 |
| KDZ0250X1.5S040N-HP | ● | 2.5 | $0_{-0.010}$ | 8.5 | 9.3 | 4 | 50 | fig.1 | 5,480 |
| KDZ0260X1.5S040N-HP | ● | 2.6 | $0_{-0.010}$ | 8.8 | 9.5 | 4 | 50 | fig.1 | 5,480 |
| KDZ0270X1.5S040N-HP | ● | 2.7 | $0_{-0.010}$ | 9.1 | 9.8 | 4 | 50 | fig.1 | 5,480 |
| KDZ0280X1.5S040N-HP | ● | 2.8 | $0_{-0.010}$ | 9.3 | 10.0 | 4 | 50 | fig.1 | 5,480 |
| KDZ0290X1.5S040N-HP | ● | 2.9 | $0_{-0.010}$ | 9.5 | 10.3 | 4 | 50 | fig.1 | 5,480 |
| KDZ0300X1.5S060N-HP | ● | 3.0 | $0_{-0.010}$ | 9 | 10 | 6 | 60 | fig.1 | 5,480 |
| KDZ0310X1.5S060N-HP | ● | 3.1 | | | | | | | |
| KDZ0320X1.5S060N-HP | ● | 3.2 | $0_{-0.012}$ | 10 | 11 | 6 | 60 | fig.1 | 5,770 |
| KDZ0330X1.5S060N-HP | ● | 3.3 | | | | | | | |
| KDZ0340X1.5S060N-HP | ● | 3.4 | | | | | | | 5,770 |
| KDZ0350X1.5S060N-HP | ● | 3.5 | $0_{-0.012}$ | 11 | 12 | 6 | 60 | fig.1 | 5,960 |
| KDZ0360X1.5S060N-HP | ● | 3.6 | | | | | | | 5,960 |
| KDZ0370X1.5S060N-HP | ● | 3.7 | | | | | | | |
| KDZ0380X1.5S060N-HP | ● | 3.8 | $0_{-0.012}$ | 12 | 13 | 6 | 60 | fig.1 | 5,960 |
| KDZ0390X1.5S060N-HP | ● | 3.9 | | | | | | | |
| KDZ0400X1.5S060N-HP | ● | 4.0 | | | | | | | |
| KDZ0410X1.5S060N-HP | ● | 4.1 | | | | | | | |
| KDZ0420X1.5S060N-HP | ● | 4.2 | $0_{-0.012}$ | 13 | 14 | 6 | 60 | fig.1 | 6,340 |
| KDZ0430X1.5S060N-HP | ● | 4.3 | | | | | | | |

加工深さは1.5D(1.5 x DC)を目安としてください

| 型番 | 在庫 | 寸法(mm) | | | | | 形状 | 希望小売価格(円) | |
|---------------------|----|--------|--------------|-----|----|------|----|-----------|-------|
| | | DC | 外径公差 | LCF | LN | DCON | | | OAL |
| KDZ0440X1.5S060N-HP | ● | 4.4 | | | | | | | |
| KDZ0450X1.5S060N-HP | ● | 4.5 | $0_{-0.012}$ | 14 | 15 | 6 | 60 | fig.1 | 6,340 |
| KDZ0460X1.5S060N-HP | ● | 4.6 | | | | | | | 6,710 |
| KDZ0470X1.5S060N-HP | ● | 4.7 | | | | | | | |
| KDZ0480X1.5S060N-HP | ● | 4.8 | $0_{-0.012}$ | 15 | 16 | 6 | 60 | fig.1 | 6,710 |
| KDZ0490X1.5S060N-HP | ● | 4.9 | | | | | | | |
| KDZ0500X1.5S060N-HP | ● | 5.0 | | | | | | | 6,710 |
| KDZ0510X1.5S060N-HP | ● | 5.1 | $0_{-0.012}$ | 16 | 17 | 6 | 60 | fig.1 | 7,100 |
| KDZ0520X1.5S060N-HP | ● | 5.2 | | | | | | | |
| KDZ0530X1.5S060N-HP | ● | 5.3 | | | | | | | |
| KDZ0540X1.5S060N-HP | ● | 5.4 | | | | | | | |
| KDZ0550X1.5S060N-HP | ● | 5.5 | $0_{-0.012}$ | 17 | 18 | 6 | 60 | fig.1 | 7,100 |
| KDZ0560X1.5S060N-HP | ● | 5.6 | | | | | | | 7,290 |
| KDZ0570X1.5S060N-HP | ● | 5.7 | | | | | | | |
| KDZ0580X1.5S060N-HP | ● | 5.8 | $0_{-0.012}$ | 18 | 19 | 6 | 60 | fig.1 | 7,290 |
| KDZ0590X1.5S060N-HP | ● | 5.9 | | | | | | | |
| KDZ0600X1.5S060N-HP | ● | 6.0 | $0_{-0.012}$ | 19 | 21 | 6 | 60 | fig.1 | 7,290 |
| KDZ0610X1.5S080N-HP | ● | 6.1 | $0_{-0.015}$ | 19 | 21 | 8 | 70 | fig.1 | 7,660 |
| KDZ0620X1.5S080N-HP | ● | 6.2 | | | | | | | |
| KDZ0630X1.5S080N-HP | ● | 6.3 | | | | | | | |
| KDZ0640X1.5S080N-HP | ● | 6.4 | $0_{-0.015}$ | 20 | 22 | 8 | 70 | fig.1 | 7,660 |
| KDZ0650X1.5S080N-HP | ● | 6.5 | | | | | | | |
| KDZ0660X1.5S080N-HP | ● | 6.6 | | | | | | | 8,130 |
| KDZ0670X1.5S080N-HP | ● | 6.7 | | | | | | | |
| KDZ0680X1.5S080N-HP | ● | 6.8 | $0_{-0.015}$ | 21 | 23 | 8 | 70 | fig.1 | 8,130 |
| KDZ0690X1.5S080N-HP | ● | 6.9 | | | | | | | |
| KDZ0700X1.5S080N-HP | ● | 7.0 | | | | | | | 8,130 |
| KDZ0710X1.5S080N-HP | ● | 7.1 | $0_{-0.015}$ | 22 | 24 | 8 | 70 | fig.1 | 8,610 |
| KDZ0720X1.5S080N-HP | ● | 7.2 | | | | | | | |
| KDZ0730X1.5S080N-HP | ● | 7.3 | | | | | | | |
| KDZ0740X1.5S080N-HP | ● | 7.4 | $0_{-0.015}$ | 23 | 25 | 8 | 70 | fig.1 | 8,610 |
| KDZ0750X1.5S080N-HP | ● | 7.5 | | | | | | | |

● : 標準在庫

KDZ-HP ショート



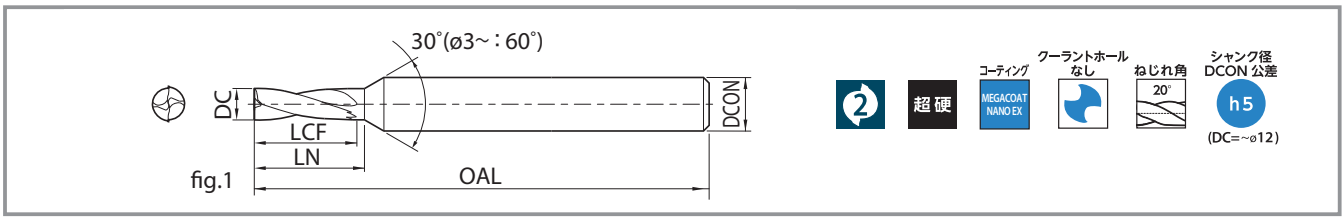
| 型番 | 在庫 | 寸法 (mm) | | | | | | 形状 | 希望小売 価格(円) |
|---------------------|----|---------|-----------------|-----|----|------|-----|-------|---------------|
| | | DC | 外径公差 | LCF | LN | DCON | OAL | | |
| KDZ0760X1.5S080N-HP | ● | 7.6 | | | | | | | |
| KDZ0770X1.5S080N-HP | ● | 7.7 | | | | | | | |
| KDZ0780X1.5S080N-HP | ● | 7.8 | 0 -0.015 | 24 | 25 | 8 | 70 | fig.1 | 9,270 |
| KDZ0790X1.5S080N-HP | ● | 7.9 | | | | | | | |
| KDZ0800X1.5S080N-HP | ● | 8.0 | 0 -0.015 | 25 | 27 | 8 | 70 | fig.1 | 9,270 |
| KDZ0810X1.5S100N-HP | ● | 8.1 | | | | | | | |
| KDZ0820X1.5S100N-HP | ● | 8.2 | 0 -0.015 | 25 | 27 | 10 | 80 | fig.1 | 10,030 |
| KDZ0830X1.5S100N-HP | ● | 8.3 | | | | | | | |
| KDZ0840X1.5S100N-HP | ● | 8.4 | 0 -0.015 | 26 | 28 | 10 | 80 | fig.1 | 10,030 |
| KDZ0850X1.5S100N-HP | ● | 8.5 | | | | | | | |
| KDZ0860X1.5S100N-HP | ● | 8.6 | | | | | | | |
| KDZ0870X1.5S100N-HP | ● | 8.7 | 0 -0.015 | 27 | 29 | 10 | 80 | fig.1 | 10,600 |
| KDZ0880X1.5S100N-HP | ● | 8.8 | | | | | | | |
| KDZ0890X1.5S100N-HP | ● | 8.9 | | | | | | | |
| KDZ0900X1.5S100N-HP | ● | 9.0 | 0 -0.015 | 28 | 30 | 10 | 80 | fig.1 | 10,600 |
| KDZ0910X1.5S100N-HP | ● | 9.1 | | | | | | | 11,160 |
| KDZ0920X1.5S100N-HP | ● | 9.2 | | | | | | | |
| KDZ0930X1.5S100N-HP | ● | 9.3 | | | | | | | |
| KDZ0940X1.5S100N-HP | ● | 9.4 | 0 -0.015 | 29 | 31 | 10 | 80 | fig.1 | 11,160 |
| KDZ0950X1.5S100N-HP | ● | 9.5 | | | | | | | |
| KDZ0960X1.5S100N-HP | ● | 9.6 | | | | | | | |
| KDZ0970X1.5S100N-HP | ● | 9.7 | 0 -0.015 | 30 | 32 | 10 | 80 | fig.1 | 11,540 |
| KDZ0980X1.5S100N-HP | ● | 9.8 | | | | | | | |
| KDZ0990X1.5S100N-HP | ● | 9.9 | 0 -0.015 | 31 | 33 | 10 | 80 | fig.1 | 11,540 |
| KDZ1000X1.5S100N-HP | ● | 10.0 | | | | | | | |
| KDZ1010X1.5S120N-HP | ● | 10.1 | 0 -0.018 | 31 | 33 | 12 | 100 | fig.1 | 12,780 |
| KDZ1020X1.5S120N-HP | ● | 10.2 | | | | | | | |
| KDZ1030X1.5S120N-HP | ● | 10.3 | 0 -0.018 | 32 | 34 | 12 | 100 | fig.1 | 12,780 |
| KDZ1040X1.5S120N-HP | ● | 10.4 | | | | | | | |
| KDZ1050X1.5S120N-HP | ● | 10.5 | | | | | | | 12,780 |
| KDZ1060X1.5S120N-HP | ● | 10.6 | | | | | | | |
| KDZ1070X1.5S120N-HP | ● | 10.7 | 0 -0.018 | 33 | 35 | 12 | 100 | fig.1 | 13,150 |
| KDZ1080X1.5S120N-HP | ● | 10.8 | | | | | | | |

加工深さは1.5D (1.5 x DC)を目安としてください

| 型番 | 在庫 | 寸法 (mm) | | | | | | 形状 | 希望小売 価格(円) |
|---------------------|----|---------|-----------------|-----|----|------|-----|-------|---------------|
| | | DC | 外径公差 | LCF | LN | DCON | OAL | | |
| KDZ1090X1.5S120N-HP | ● | 10.9 | | | | | | | |
| KDZ1100X1.5S120N-HP | ● | 11.0 | 0 -0.018 | 34 | 36 | 12 | 100 | fig.1 | 13,150 |
| KDZ1110X1.5S120N-HP | ● | 11.1 | | | | | | | 13,720 |
| KDZ1120X1.5S120N-HP | ● | 11.2 | | | | | | | |
| KDZ1130X1.5S120N-HP | ● | 11.3 | 0 -0.018 | 35 | 37 | 12 | 100 | fig.1 | 13,720 |
| KDZ1140X1.5S120N-HP | ● | 11.4 | | | | | | | |
| KDZ1150X1.5S120N-HP | ● | 11.5 | | | | | | | 13,720 |
| KDZ1160X1.5S120N-HP | ● | 11.6 | | | | | | | |
| KDZ1170X1.5S120N-HP | ● | 11.7 | 0 -0.018 | 36 | 38 | 12 | 100 | fig.1 | 14,100 |
| KDZ1180X1.5S120N-HP | ● | 11.8 | | | | | | | |
| KDZ1190X1.5S120N-HP | ● | 11.9 | | | | | | | |
| KDZ1200X1.5S120N-HP | ● | 12.0 | 0 -0.018 | 37 | 39 | 12 | 100 | fig.1 | 14,100 |
| KDZ1250X1.5S120N-HP | ● | 12.5 | | 41 | 41 | | | | 16,500 |
| KDZ1300X1.5S120N-HP | ● | 13.0 | | 43 | 43 | 12 | 100 | fig.2 | |
| KDZ1350X1.5S120N-HP | ● | 13.5 | 0 -0.018 | 44 | 44 | | | | 20,130 |
| KDZ1400X1.5S120N-HP | ● | 14.0 | | 45 | 45 | | | | |
| KDZ1450X1.5S120N-HP | ● | 14.5 | | 47 | 47 | | | | |
| KDZ1500X1.5S120N-HP | ● | 15.0 | 0 -0.018 | 48 | 48 | 12 | 115 | fig.2 | 22,550 |
| KDZ1550X1.5S120N-HP | ● | 15.5 | | 50 | 50 | | | | 25,520 |
| KDZ1600X1.5S160N-HP | ● | 16.0 | 0 -0.018 | 52 | 52 | 16 | 115 | fig.1 | 25,520 |
| KDZ1650X1.5S160N-HP | ● | 16.5 | | 53 | 53 | | | | |
| KDZ1700X1.5S160N-HP | ● | 17.0 | | 54 | 54 | 16 | 115 | fig.2 | 34,980 |
| KDZ1750X1.5S160N-HP | ● | 17.5 | 0 -0.018 | 56 | 56 | | | | 36,410 |
| KDZ1800X1.5S160N-HP | ● | 18.0 | | 57 | 57 | | | | |
| KDZ1850X1.5S160N-HP | ● | 18.5 | | 59 | 59 | | | | |
| KDZ1900X1.5S160N-HP | ● | 19.0 | 0 -0.021 | 60 | 60 | 16 | 125 | fig.2 | 39,990 |
| KDZ1950X1.5S160N-HP | ● | 19.5 | | 62 | 62 | | | | 45,270 |
| KDZ2000X1.5S200N-HP | ● | 20.0 | 0 -0.021 | 63 | 63 | 20 | 125 | fig.1 | 45,270 |

●：標準在庫

KDZ-HP レギュラー



| 型番 | 在庫 | 寸法(mm) | | | | | 形状 | 希望小売価格(円) | |
|---------------------|----|--------|----------------------------------|-----|------|------|----|-----------|-------|
| | | DC | 外径公差 | LCF | LN | DCON | | | OAL |
| KDZ0300X3.0S060N-HP | ● | 3.0 | ⁰ / _{-0.010} | 14 | 15 | 6 | 60 | fig.1 | 5,580 |
| KDZ0310X3.0S060N-HP | ● | 3.1 | ⁰ / _{-0.012} | 14 | 15 | 6 | 60 | fig.1 | 5,910 |
| KDZ0320X3.0S060N-HP | ● | 3.2 | ⁰ / _{-0.012} | 15 | 16 | 6 | 60 | fig.1 | 5,910 |
| KDZ0330X3.0S060N-HP | ● | 3.3 | ⁰ / _{-0.012} | 15 | 16 | 6 | 60 | fig.1 | 5,910 |
| KDZ0340X3.0S060N-HP | ● | 3.4 | ⁰ / _{-0.012} | 17 | 18 | 6 | 60 | fig.1 | 6,100 |
| KDZ0350X3.0S060N-HP | ● | 3.5 | ⁰ / _{-0.012} | 17 | 18 | 6 | 60 | fig.1 | 6,100 |
| KDZ0360X3.0S060N-HP | ● | 3.6 | ⁰ / _{-0.012} | 17 | 18 | 6 | 60 | fig.1 | 6,100 |
| KDZ0370X3.0S060N-HP | ● | 3.7 | ⁰ / _{-0.012} | 17 | 18 | 6 | 60 | fig.1 | 6,100 |
| KDZ0380X3.0S060N-HP | ● | 3.8 | ⁰ / _{-0.012} | 17 | 18 | 6 | 60 | fig.1 | 6,100 |
| KDZ0390X3.0S060N-HP | ● | 3.9 | ⁰ / _{-0.012} | 17 | 18 | 6 | 60 | fig.1 | 6,100 |
| KDZ0400X3.0S060N-HP | ● | 4.0 | ⁰ / _{-0.012} | 19 | 20 | 6 | 60 | fig.1 | 6,100 |
| KDZ0410X3.0S060N-HP | ● | 4.1 | ⁰ / _{-0.012} | 19 | 20 | 6 | 60 | fig.1 | 6,480 |
| KDZ0420X3.0S060N-HP | ● | 4.2 | ⁰ / _{-0.012} | 20 | 21 | 6 | 60 | fig.1 | 6,480 |
| KDZ0430X3.0S060N-HP | ● | 4.3 | ⁰ / _{-0.012} | 20 | 21 | 6 | 60 | fig.1 | 6,480 |
| KDZ0440X3.0S060N-HP | ● | 4.4 | ⁰ / _{-0.012} | 20 | 21 | 6 | 60 | fig.1 | 6,480 |
| KDZ0450X3.0S060N-HP | ● | 4.5 | ⁰ / _{-0.012} | 20 | 21 | 6 | 60 | fig.1 | 6,480 |
| KDZ0460X3.0S060N-HP | ● | 4.6 | ⁰ / _{-0.012} | 20 | 21 | 6 | 60 | fig.1 | 6,480 |
| KDZ0470X3.0S060N-HP | ● | 4.7 | ⁰ / _{-0.012} | 21 | 22 | 6 | 60 | fig.1 | 6,810 |
| KDZ0480X3.0S060N-HP | ● | 4.8 | ⁰ / _{-0.012} | 21 | 22 | 6 | 60 | fig.1 | 6,810 |
| KDZ0490X3.0S060N-HP | ● | 4.9 | ⁰ / _{-0.012} | 21 | 22 | 6 | 60 | fig.1 | 6,810 |
| KDZ0500X3.0S060N-HP | ● | 5.0 | ⁰ / _{-0.012} | 21 | 22 | 6 | 60 | fig.1 | 6,810 |
| KDZ0510X3.0S060N-HP | ● | 5.1 | ⁰ / _{-0.012} | 23 | 24 | 6 | 60 | fig.1 | 7,290 |
| KDZ0520X3.0S060N-HP | ● | 5.2 | ⁰ / _{-0.012} | 23 | 24 | 6 | 60 | fig.1 | 7,290 |
| KDZ0530X3.0S060N-HP | ● | 5.3 | ⁰ / _{-0.012} | 24 | 25 | 6 | 60 | fig.1 | 7,290 |
| KDZ0540X3.0S060N-HP | ● | 5.4 | ⁰ / _{-0.012} | 24 | 25 | 6 | 60 | fig.1 | 7,290 |
| KDZ0550X3.0S060N-HP | ● | 5.5 | ⁰ / _{-0.012} | 25 | 26 | 6 | 60 | fig.1 | 7,290 |
| KDZ0560X3.0S060N-HP | ● | 5.6 | ⁰ / _{-0.012} | 25 | 26 | 6 | 60 | fig.1 | 7,290 |
| KDZ0570X3.0S060N-HP | ● | 5.7 | ⁰ / _{-0.012} | 26 | 27 | 6 | 60 | fig.1 | 7,470 |
| KDZ0580X3.0S060N-HP | ● | 5.8 | ⁰ / _{-0.012} | 26 | 27 | 6 | 60 | fig.1 | 7,470 |
| KDZ0590X3.0S060N-HP | ● | 5.9 | ⁰ / _{-0.012} | 26 | 27 | 6 | 60 | fig.1 | 7,470 |
| KDZ0600X3.0S060N-HP | ● | 6.0 | ⁰ / _{-0.012} | 28 | (28) | 6 | 60 | fig.1 | 7,470 |
| KDZ0610X3.0S080N-HP | ● | 6.1 | ⁰ / _{-0.015} | 28 | 29 | 8 | 70 | fig.1 | 7,850 |
| KDZ0620X3.0S080N-HP | ● | 6.2 | ⁰ / _{-0.015} | 28 | 29 | 8 | 70 | fig.1 | 7,850 |
| KDZ0630X3.0S080N-HP | ● | 6.3 | ⁰ / _{-0.015} | 28 | 29 | 8 | 70 | fig.1 | 7,850 |
| KDZ0640X3.0S080N-HP | ● | 6.4 | ⁰ / _{-0.015} | 28 | 29 | 8 | 70 | fig.1 | 7,850 |
| KDZ0650X3.0S080N-HP | ● | 6.5 | ⁰ / _{-0.015} | 30 | 31 | 8 | 70 | fig.1 | 8,320 |
| KDZ0660X3.0S080N-HP | ● | 6.6 | ⁰ / _{-0.015} | 30 | 31 | 8 | 70 | fig.1 | 8,320 |
| KDZ0670X3.0S080N-HP | ● | 6.7 | ⁰ / _{-0.015} | 31 | 32 | 8 | 70 | fig.1 | 8,320 |
| KDZ0680X3.0S080N-HP | ● | 6.8 | ⁰ / _{-0.015} | 31 | 32 | 8 | 70 | fig.1 | 8,320 |
| KDZ0690X3.0S080N-HP | ● | 6.9 | ⁰ / _{-0.015} | 31 | 32 | 8 | 70 | fig.1 | 8,320 |
| KDZ0700X3.0S080N-HP | ● | 7.0 | ⁰ / _{-0.015} | 32 | 33 | 8 | 70 | fig.1 | 8,320 |
| KDZ0710X3.0S080N-HP | ● | 7.1 | ⁰ / _{-0.015} | 32 | 33 | 8 | 70 | fig.1 | 8,320 |
| KDZ0720X3.0S080N-HP | ● | 7.2 | ⁰ / _{-0.015} | 32 | 33 | 8 | 70 | fig.1 | 8,790 |
| KDZ0730X3.0S080N-HP | ● | 7.3 | ⁰ / _{-0.015} | 32 | 33 | 8 | 70 | fig.1 | 8,790 |
| KDZ0740X3.0S080N-HP | ● | 7.4 | ⁰ / _{-0.015} | 32 | 33 | 8 | 70 | fig.1 | 8,790 |
| KDZ0750X3.0S080N-HP | ● | 7.5 | ⁰ / _{-0.015} | 34 | 35 | 8 | 70 | fig.1 | 8,790 |

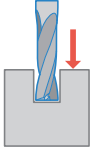
| 型番 | 在庫 | 寸法(mm) | | | | | 形状 | 希望小売価格(円) | |
|---------------------|----|--------|----------------------------------|-----|------|------|-----|-----------|--------|
| | | DC | 外径公差 | LCF | LN | DCON | | | OAL |
| KDZ0760X3.0S080N-HP | ● | 7.6 | ⁰ / _{-0.015} | 34 | 35 | 8 | 70 | fig.1 | 9,460 |
| KDZ0770X3.0S080N-HP | ● | 7.7 | ⁰ / _{-0.015} | 34 | 35 | 8 | 70 | fig.1 | 9,460 |
| KDZ0780X3.0S080N-HP | ● | 7.8 | ⁰ / _{-0.015} | 34 | 35 | 8 | 70 | fig.1 | 9,460 |
| KDZ0790X3.0S080N-HP | ● | 7.9 | ⁰ / _{-0.015} | 34 | 35 | 8 | 70 | fig.1 | 9,460 |
| KDZ0800X3.0S080N-HP | ● | 8.0 | ⁰ / _{-0.015} | 36 | (36) | 8 | 70 | fig.1 | 9,460 |
| KDZ0810X3.0S100N-HP | ● | 8.1 | ⁰ / _{-0.015} | 36 | 37 | 10 | 80 | fig.1 | 10,210 |
| KDZ0820X3.0S100N-HP | ● | 8.2 | ⁰ / _{-0.015} | 36 | 37 | 10 | 80 | fig.1 | 10,210 |
| KDZ0830X3.0S100N-HP | ● | 8.3 | ⁰ / _{-0.015} | 36 | 37 | 10 | 80 | fig.1 | 10,210 |
| KDZ0840X3.0S100N-HP | ● | 8.4 | ⁰ / _{-0.015} | 36 | 37 | 10 | 80 | fig.1 | 10,210 |
| KDZ0850X3.0S100N-HP | ● | 8.5 | ⁰ / _{-0.015} | 36 | 37 | 10 | 80 | fig.1 | 10,210 |
| KDZ0860X3.0S100N-HP | ● | 8.6 | ⁰ / _{-0.015} | 38 | 39 | 10 | 80 | fig.1 | 10,780 |
| KDZ0870X3.0S100N-HP | ● | 8.7 | ⁰ / _{-0.015} | 38 | 39 | 10 | 80 | fig.1 | 10,780 |
| KDZ0880X3.0S100N-HP | ● | 8.8 | ⁰ / _{-0.015} | 39 | 40 | 10 | 80 | fig.1 | 10,780 |
| KDZ0890X3.0S100N-HP | ● | 8.9 | ⁰ / _{-0.015} | 39 | 40 | 10 | 80 | fig.1 | 10,780 |
| KDZ0900X3.0S100N-HP | ● | 9.0 | ⁰ / _{-0.015} | 40 | 41 | 10 | 80 | fig.1 | 10,780 |
| KDZ0910X3.0S100N-HP | ● | 9.1 | ⁰ / _{-0.015} | 40 | 41 | 10 | 80 | fig.1 | 10,780 |
| KDZ0920X3.0S100N-HP | ● | 9.2 | ⁰ / _{-0.015} | 40 | 41 | 10 | 80 | fig.1 | 11,360 |
| KDZ0930X3.0S100N-HP | ● | 9.3 | ⁰ / _{-0.015} | 40 | 41 | 10 | 80 | fig.1 | 11,360 |
| KDZ0940X3.0S100N-HP | ● | 9.4 | ⁰ / _{-0.015} | 40 | 41 | 10 | 80 | fig.1 | 11,360 |
| KDZ0950X3.0S100N-HP | ● | 9.5 | ⁰ / _{-0.015} | 42 | 43 | 10 | 80 | fig.1 | 11,360 |
| KDZ0960X3.0S100N-HP | ● | 9.6 | ⁰ / _{-0.015} | 42 | 43 | 10 | 80 | fig.1 | 11,360 |
| KDZ0970X3.0S100N-HP | ● | 9.7 | ⁰ / _{-0.015} | 42 | 43 | 10 | 80 | fig.1 | 11,730 |
| KDZ0980X3.0S100N-HP | ● | 9.8 | ⁰ / _{-0.015} | 42 | 43 | 10 | 80 | fig.1 | 11,730 |
| KDZ0990X3.0S100N-HP | ● | 9.9 | ⁰ / _{-0.015} | 42 | 43 | 10 | 80 | fig.1 | 11,730 |
| KDZ1000X3.0S100N-HP | ● | 10.0 | ⁰ / _{-0.015} | 45 | (45) | 10 | 80 | fig.1 | 11,730 |
| KDZ1010X3.0S120N-HP | ● | 10.1 | ⁰ / _{-0.018} | 45 | 46 | 12 | 100 | fig.1 | 13,050 |
| KDZ1020X3.0S120N-HP | ● | 10.2 | ⁰ / _{-0.018} | 45 | 46 | 12 | 100 | fig.1 | 13,050 |
| KDZ1030X3.0S120N-HP | ● | 10.3 | ⁰ / _{-0.018} | 46 | 47 | 12 | 100 | fig.1 | 13,050 |
| KDZ1040X3.0S120N-HP | ● | 10.4 | ⁰ / _{-0.018} | 46 | 47 | 12 | 100 | fig.1 | 13,050 |
| KDZ1050X3.0S120N-HP | ● | 10.5 | ⁰ / _{-0.018} | 46 | 47 | 12 | 100 | fig.1 | 13,050 |
| KDZ1060X3.0S120N-HP | ● | 10.6 | ⁰ / _{-0.018} | 47 | 48 | 12 | 100 | fig.1 | 13,440 |
| KDZ1070X3.0S120N-HP | ● | 10.7 | ⁰ / _{-0.018} | 47 | 48 | 12 | 100 | fig.1 | 13,440 |
| KDZ1080X3.0S120N-HP | ● | 10.8 | ⁰ / _{-0.018} | 47 | 48 | 12 | 100 | fig.1 | 13,440 |
| KDZ1090X3.0S120N-HP | ● | 10.9 | ⁰ / _{-0.018} | 47 | 48 | 12 | 100 | fig.1 | 13,440 |
| KDZ1100X3.0S120N-HP | ● | 11.0 | ⁰ / _{-0.018} | 51 | 52 | 12 | 100 | fig.1 | 14,000 |
| KDZ1110X3.0S120N-HP | ● | 11.1 | ⁰ / _{-0.018} | 51 | 52 | 12 | 100 | fig.1 | 14,000 |
| KDZ1120X3.0S120N-HP | ● | 11.2 | ⁰ / _{-0.018} | 51 | 52 | 12 | 100 | fig.1 | 14,000 |
| KDZ1130X3.0S120N-HP | ● | 11.3 | ⁰ / _{-0.018} | 51 | 52 | 12 | 100 | fig.1 | 14,000 |
| KDZ1140X3.0S120N-HP | ● | 11.4 | ⁰ / _{-0.018} | 53 | 54 | 12 | 100 | fig.1 | 14,000 |
| KDZ1150X3.0S120N-HP | ● | 11.5 | ⁰ / _{-0.018} | 53 | 54 | 12 | 100 | fig.1 | 14,000 |
| KDZ1160X3.0S120N-HP | ● | 11.6 | ⁰ / _{-0.018} | 53 | 54 | 12 | 100 | fig.1 | 14,380 |
| KDZ1170X3.0S120N-HP | ● | 11.7 | ⁰ / _{-0.018} | 53 | 54 | 12 | 100 | fig.1 | 14,380 |
| KDZ1180X3.0S120N-HP | ● | 11.8 | ⁰ / _{-0.018} | 53 | 54 | 12 | 100 | fig.1 | 14,380 |
| KDZ1190X3.0S120N-HP | ● | 11.9 | ⁰ / _{-0.018} | 53 | 54 | 12 | 100 | fig.1 | 14,380 |
| KDZ1200X3.0S120N-HP | ● | 12.0 | ⁰ / _{-0.018} | 54 | (54) | 12 | 100 | fig.1 | 14,380 |

● : 標準在庫

加工深さは2.0D (2.0 × DC) を目安としてください
2D以上の深さとなる場合はステップ加工を推奨します

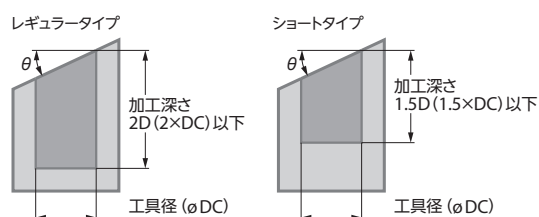
切削条件表

KDZ

| 被削材 | 区分 | 外径DC (mm) | φ1 | φ2 | φ3 | φ4 | φ5 | φ6 | φ8 | φ10 | φ12 |
|---------------------------|---|--------------------------|--------|--------|--------|--------|--------|-------|-------|-------|-------|
| 一般構造用鋼・炭素鋼 S5400, S45C |  突き加工 | 回転数 (min ⁻¹) | 19,500 | 11,200 | 8,300 | 6,200 | 5,000 | 4,200 | 3,200 | 2,500 | 2,100 |
| | | 送り (mm/min) | 300 | 380 | 520 | 520 | 520 | 520 | 520 | 520 | 450 |
| 合金鋼 SCM, SNCM | | 回転数 (min ⁻¹) | 19,000 | 10,000 | 7,200 | 5,400 | 4,400 | 3,600 | 2,700 | 2,200 | 1,800 |
| | | 送り (mm/min) | 300 | 320 | 450 | 450 | 450 | 450 | 450 | 400 | 400 |
| プリハードン鋼 (30~45HRC) | | 回転数 (min ⁻¹) | 16,000 | 8,000 | 3,900 | 2,900 | 2,300 | 1,900 | 1,500 | 1,200 | 1,000 |
| | | 送り (mm/min) | 210 | 210 | 210 | 210 | 210 | 210 | 210 | 190 | 190 |
| ダクタイル鋳鉄 FCD400 | | 回転数 (min ⁻¹) | 16,000 | 10,000 | 7,200 | 5,400 | 4,400 | 3,600 | 2,700 | 2,200 | 1,800 |
| | | 送り (mm/min) | 200 | 300 | 390 | 390 | 390 | 390 | 390 | 340 | 340 |
| アルミニウム合金 A7075 | | 回転数 (min ⁻¹) | 20,000 | 20,000 | 17,800 | 13,100 | 10,500 | 8,900 | 6,700 | 5,400 | 4,500 |
| | | 送り (mm/min) | 500 | 850 | 1,270 | 1,270 | 1,270 | 1,270 | 1,270 | 1,270 | 1,270 |
| アルミニウム合金鋳物 AC, ADC | | 回転数 (min ⁻¹) | 20,000 | 20,000 | 13,100 | 10,000 | 8,000 | 6,700 | 5,000 | 4,000 | 3,400 |
| | | 送り (mm/min) | 450 | 750 | 820 | 820 | 820 | 820 | 820 | 820 | 820 |

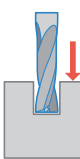
注意

- **本工具は突き加工専用のため、横送り加工には使用できません**
- 切削油の使用を推奨します
- 機械剛性、工具突き出し量によって切削条件は調整してください
- 2D以上の深さとなる場合はステップ加工を推奨します
- マシン、チャックはできる限り剛性の高いものを使用してください
- ステンレス鋼 (SUS304・SUS316) の切削は推奨しません
- 傾斜面への加工の場合は、ワークの傾斜角によって加工条件の調整が必要となります (右図)
ワーク傾斜角 (θ) ≤ 30° ⇒ 送りを50%以下に下げてください
ワーク傾斜角 (θ) > 30° ⇒ 回転数を70%以下、送りを30%以下に下げてください



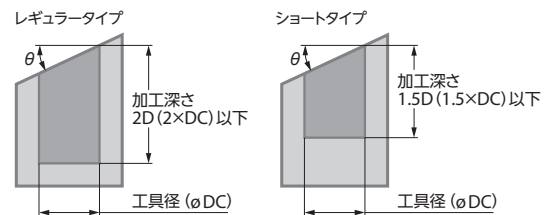
切削条件表

KDZ-HP

| 被削材 | 区分 | 外径DC (mm) | φ1 | φ1.5 | φ2 | φ2.5 | φ3 | φ3.5 | φ4 | φ4.5 | φ5 | φ6 | φ8 | φ10 | φ12 | φ14 | φ16 | φ18 | φ20 |
|---------------------------|---|--------------------------|--------|--------|--------|--------|--------|--------|--------|--------|--------|-------|-------|-------|-------|-------|-------|-------|-------|
| 一般構造用鋼・炭素鋼 S5400, S45C |  突き加工 | 回転数 (min ⁻¹) | 20,700 | 13,800 | 11,150 | 9,200 | 9,100 | 7,800 | 6,800 | 6,100 | 5,500 | 4,600 | 3,500 | 2,800 | 2,300 | 1,800 | 1,600 | 1,400 | 1,300 |
| | | 送り (mm/min) | 350 | 350 | 430 | 430 | 520 | 520 | 520 | 520 | 520 | 520 | 520 | 520 | 520 | 520 | 480 | 480 | 480 |
| 合金鋼 SCM, SNCM | | 回転数 (min ⁻¹) | 17,500 | 11,700 | 9,600 | 7,650 | 7,200 | 6,200 | 5,400 | 4,800 | 4,400 | 3,600 | 2,700 | 2,200 | 1,800 | 1,500 | 1,350 | 1,200 | 1,100 |
| | | 送り (mm/min) | 290 | 290 | 380 | 380 | 450 | 450 | 450 | 450 | 450 | 450 | 450 | 450 | 450 | 450 | 420 | 420 | 420 |
| プリハードン鋼 (30~45HRC) | | 回転数 (min ⁻¹) | 9,600 | 6,400 | 5,570 | 4,460 | 3,900 | 3,400 | 2,900 | 2,600 | 2,300 | 1,900 | 1,500 | 1,200 | 1,000 | 850 | 750 | 650 | 600 |
| | | 送り (mm/min) | 120 | 120 | 170 | 170 | 210 | 210 | 210 | 210 | 210 | 210 | 210 | 210 | 210 | 210 | 200 | 200 | 200 |
| ダクタイル鋳鉄 FCD400 | | 回転数 (min ⁻¹) | 15,900 | 10,600 | 10,360 | 8,290 | 7,200 | 6,200 | 5,400 | 4,800 | 4,400 | 3,600 | 2,700 | 2,200 | 1,800 | 1,550 | 1,350 | 1,200 | 1,100 |
| | | 送り (mm/min) | 220 | 250 | 390 | 390 | 390 | 390 | 390 | 390 | 390 | 390 | 390 | 390 | 390 | 390 | 360 | 360 | 360 |
| アルミニウム合金 A7075 | | 回転数 (min ⁻¹) | 39,800 | 26,600 | 23,000 | 18,500 | 17,800 | 15,200 | 13,100 | 11,800 | 10,500 | 8,900 | 6,700 | 5,400 | 4,500 | 3,800 | 3,400 | 3,000 | 2,700 |
| | | 送り (mm/min) | 900 | 1,000 | 1,270 | 1,270 | 1,270 | 1,270 | 1,270 | 1,270 | 1,270 | 1,270 | 1,270 | 1,270 | 1,270 | 1,270 | 1,270 | 1,270 | 1,270 |
| アルミニウム合金鋳物 AC, ADC | 回転数 (min ⁻¹) | 29,000 | 19,200 | 17,500 | 14,000 | 13,100 | 11,500 | 10,000 | 8,800 | 8,000 | 6,700 | 5,000 | 4,000 | 3,400 | 2,900 | 2,500 | 2,200 | 2,000 | |
| | 送り (mm/min) | 550 | 550 | 820 | 820 | 820 | 820 | 820 | 820 | 820 | 820 | 820 | 820 | 820 | 820 | 820 | 820 | 820 | |

注意

- **本工具は突き加工専用のため、横送り加工には使用できません**
- 切削油の使用を推奨します
- 機械剛性、工具突き出し量によって切削条件は調整してください
- 2D以上の深さとなる場合はステップ加工を推奨します
- マシン、チャックはできる限り剛性の高いものを使用してください
- ステンレス鋼 (SUS304・SUS316) の切削は推奨しません
- 傾斜面への加工の場合は、ワークの傾斜角によって加工条件の調整が必要となります (右図)
ワーク傾斜角 (θ) ≤ 30° ⇒ 送りを50%以下に下げてください
ワーク傾斜角 (θ) > 30° ⇒ 回転数を70%以下、送りを30%以下に下げてください





あらゆるニーズへのベストバランスを追求し、

トータルソリューションを実現する

ソリッドツールの新たなシーズ、K-series誕生！

京セラは常に社会に有意義な成果をもたらすテクノロジーに挑み続けています。

K-seriesとともにプロダクトに輝きを！

イノベーションに感動を！



～京セラ工具の最新情報がここに～

京セラ工具公式アプリ

各アプリストアにて **京セラ 工具** 🔍 検索



京セラ工具

LINE 公式アカウント

右の二次元コードもしくは、[@kyoceratool]

友だち追加は
こちら



[LINE]はLINE株式会社の商標または登録商標です
[MEGACOAT][MEGACOAT NANO]は京セラ株式会社の登録商標です

切削工具に関する技術的なご相談は (携帯からもご利用できます)

京セラ
カスタマーサポートセンター **0120-39-6369**

FAX: 075-602-0335 MAIL: tool.support@kyocera.jp

●受付時間 9:00～12:00 / 13:00～17:00 ●土曜・日曜・祝日・会社休日は受付していません

※個人情報の利用…お問合せの回答やサービス向上、情報提供に使用いたします。

※お問合せの際は、番号をお間違えないようお願い申し上げます。

京セラ株式会社
機械工具事業本部

〒612-8501 京都市伏見区竹田鳥羽殿町6番地
TEL: 075-604-3651 FAX: 075-604-3472
<https://www.kyocera.co.jp/prdct/tool/index.html>



当カタログに記載の情報は2022年9月時点のものです。
当カタログについては、無断で複製・転載することを禁じます。
CP475A CAT/25.0T2209NST
© 2022 KYOCERA Corporation